



DRINKS

Something we can
all agree on

SOFT DRINKS

Luscombe 270ml bottle	5.35
• Hot Ginger Beer 81kcal	
• Sicilian Lemonade 86kcal	
• Raspberry Crush 89kcal	
Cola 147kcal	3.55
Diet Cola 0kcal	3.45
Lemonade 60kcal	3.45
Super Berry Smoothie triple berry smoothie with banana, lime, coconut 161kcal	5.60
Super Greens Juice green juice with cucumber, apple, mango, spinach, lime & ginger 81kcal	5.60
Coca-Cola 330ml bottle 139kcal	4.15
Diet Coke 330ml bottle 2kcal	3.65
Coke Zero 330ml bottle 0kcal	3.65
Morning Cooler lemon, elderflower and mint, finished with soda and cucumber 73kcal	4.70
Pink Lemonade pomegranate, fresh lemon and lemonade 181kcal	4.65
Watermelon & Basil Cooler watermelon, basil, pineapple juice and soda 105kcal	4.70

BEER & CIDER



Pint

DRAUGHT

Menabrea (4.8%)	6.55
Birra Moretti (4.6%)	6.50
Cruzcampo (4.4%)	5.70
Hofmeister Helles (5.0%)	6.70
Brixton Reliance Pale Ale (4.2%)	6.65
Henry Weston's Vintage Cider (5.2%)	5.85

BOTTLES

Estrella Damm (4.6%) 330ml bottle	5.80
Modelo Especial (4.5%) 355ml bottle	5.80
Daura Damm (5.4%) 330ml bottle gf	5.80
Bristol Beer Factory Milk Stout (4.5%) 500ml bottle	6.10
Birra Moretti Zero (0.0%) 330ml bottle 66kcal	5.20
Days Pale Ale (0.0%) 330ml bottle 69kcal	5.35
Lucky Saint (0.5%) 330ml bottle 53kcal	5.45
Old Mout Flavoured Cider (4.0%) 500ml bottle	6.10

All kcals are per serving

kcal kilocalories (adults need around 2000kcal a day)

gf gluten free

COCKTAILS

SIGNATURE

Espresso Martini 🍸 11.50
vanilla vodka, Kahlúa coffee liqueur
and cold brew coffee

Porn Star Martini 🍸 11.50
vanilla vodka, passion fruit, pineapple, lime,
vanilla with a shot of Italian sparkling wine

Flapper Fizz Martini 🍸 11.50
the Porn Star with an elegant twist;
vanilla vodka, Mount Gay Rum,
passion fruit, pineapple, Italian
sparkling wine, lime sherbet

Ruby Royale 🍸 12.75
Cygnet 22 Gin, Chambord, spiced
cranberry & clementine, Wild Life
Botanicals Blush, fresh lemon juice

Strawberry Cosmo 🍸 11.50
Ketel One Citroen Vodka, Cointreau,
strawberry, cranberry juice, fresh lime juice

Paloma 🍸 10.95
El Jimador Reposado Tequila,
blood orange & grapefruit,
lime juice, soda

Raspberry & Vanilla Martini 🍸 10.75
Mount Gay Rum, Montzi botanical spirit,
raspberry, vanilla and cranberry juice

SHORT

Chocolate Old Fashioned 🍸 10.75
Woodford Reserve, chocolate, chocolate
bitters, chocolate straw

Spicy Mezcal Paloma 🍸 11.50
Quiquiriqui Mezcal, caramelised pineapple
& ginger shrub, grapefruit, soda, lime juice,
Firewater bitters, tajin

Red Cherry Whiskey Sour 🍸 11.50
Jack Daniel's, Montzi Sour Cherry liqueur,
vanilla, fresh lemon juice

Matcha Martini 🍸 10.95
matcha blended with vanilla vodka
and freshly squeezed lemon juice

Matcha Margarita 🍸 11.50
matcha blended with El Jimador Tequila,
Cointreau and freshly squeezed lime juice

LONG

Cherry Bakewell 🍸 11.25
a Cosy Club favourite; Montzi Sour
Cherry Liqueur, Luxardo Amaretto,
caramel, cherry juice

English Garden 🍸 10.50
a delightful mix of all things English.
Hendrick's Gin, elderflower, cucumber
and cloudy apple juice

Strawberry Shrub Mojito 🍸 10.50
the perfect drink for any occasion;
Havana 3 year old Rum, fresh mint,
lime with strawberry shrub syrup

Mango Colada 🍸 10.75
if you like Cosy Coladas, avoid the
rain with Mount Gay Rum, mango,
coconut, lime, pineapple

Tickled Pink 🍸 10.50
Ramsbury Vodka, Cointreau, spiced
cranberry & clementine, orange bitters

SPRITZ

Marmalade Spritz 🍸 10.25
orange & rhubarb marmalade liqueur,
topped with soda and Italian sparkling wine

Peach & Elderflower Spritz 🍸 10.25
peach & elderflower liqueur, topped with
soda and Italian sparkling wine

TEETOTAL TIPPLES

Italian Spritz 🍸 7.50
Lyre's Non-Alcoholic Italian Spritz,
Fever-Tree Orange and Ginger Ale,
strawberry shrub syrup 86kcal

Raspberry & Orange Blossom Tonic 🍸 7.50
fruity & refreshing, combining Everleaf
Marine with falernum and Fever-Tree
Rhubarb & Raspberry Tonic 83kcal

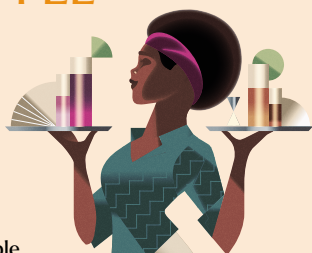
Pineapple & Rosehip Punch 🍸 7.50
short and bold, Everleaf Mountain with
spiced pineapple and pineapple juice 60kcal

TEATIME TIPPLE

Any two cocktails
for £12.95

Sunday to Friday
4pm to 8pm*

*T&C's apply.
cosyclub.co.uk/teatimetipple



All kcals are per serving
kcal kilocalories (adults need around 2000kcal a day)

WINE

SPARKLING



Santa Fosca, Prosecco Italy **vg** 6.25 | 34.95
Delicate with green apple and citrus blossom.

Della Vite, Prosecco Rosé Italy **vg** 8.25 | 45.25
Sustainably made & created by the Delevingne sisters. Notes of wild berries and rhubarb.

Ridgeview, Bloomsbury Brut UK **vg** 11.75 | 64.95
Deliciously crisp English sparkling wine from the South Downs.

Laurent-Perrier La Cuvée 88.95
Champagne France **vg**
Elegant with grapefruit and orange blossom aromas.

WHITE



Verdejo, Casa Albali Spain 6.25 | 8.25 | 23.95
Refreshing, apple and tropical fruit.

Trebbiano di Romagna Italy **vg** 6.95 | 9.25 | 26.75
Citrus flavours and floral notes.

Swartland Chenin Blanc 7.50 | 9.95 | 28.95
South Africa **vg**
A fresh wine with citrus and apple flavours.

Errázuriz Chardonnay Chile 8.25 | 10.95 | 31.95
A fresh, tropical fruit flavoured Chardonnay.

Riff Organic Pinot Grigio Italy **vg** 8.75 | 11.75 | 33.95
Dry and crisp with gentle flavours of apple and citrus.

Picpoul de Pinet, Réserve Mirou France **vg** 9.50 | 12.75 | 36.50
Bright, fresh and citrusy, this is a great wine to have with food.

Yealands Single Vineyard Sauvignon Blanc, New Zealand **vg** 10.25 | 13.75 | 39.95
Made by an award winning wine maker with heaps of lime, passion fruit and blackcurrants. A knockout!

Albariño, Bodegas Castro Spain 11.25 | 14.95 | 43.25
A classic. Vibrant acidity balanced by white peach flavours.

Gavi del Comune di Gavi, Morgassi 2021 Italy **vg** 12.25 | 16.50 | 47.25
Easy drinking white with floral and citrus flavours.

Sta Rita Hills Lincourt Reserve Chardonnay, 2020 California 56.50
This Chardonnay boasts an elegance and character rarely found. Accents of pineapples balanced with toasted marshmallow and honeycomb. One not to be missed!

Sancerre, Les Collinettes, Joseph Mellot France **vg** 64.50
Stylish and racy, classic gooseberry and blackcurrant characters with a minerally finish.

Meursault Cuvee Charles Maxime Latour Giraud 2020 France 84.95
A classic Burgundian power-house; ripe, fruity, full bodied and finely balanced with a creamy richness.

RED



Castillo de Mureva, Organic Tempranillo Spain 6.25 | 8.25 | 23.95
Cherry with aromas of strawberries and forest fruits.

Fico Grande Sangiovese di Romagna Italy **vg** 6.95 | 9.25 | 26.75
Fruity, fresh with aromas of red fruits. A wine for every occasion.

Central Valley, Merlot Chile 7.50 | 9.95 | 28.95
A fruity Merlot with raspberries and blueberries.

Zensa Primitivo IGP Puglia Organic Italy **vg** 8.25 | 10.95 | 31.95
A complex bouquet, reminiscent of cherries, dried berries and toasted almonds. In the mouth it is full-bodied yet smooth and elegant with a silky texture.

Mount Rozier Pinot Noir South Africa **vg** 8.95 | 11.95 | 34.75
Bursting with morello cherry and raspberry aromas, this delicious Pinot Noir is juicy and smooth with a touch of spice on the finish.

Viña Pomal Rioja Crianza Spain **v** 9.95 | 13.75 | 39.25
Dense black fruit with toasty notes from barrel ageing. Balanced and fresh.

Malbec, Catena Appellation Argentina 10.75 | 14.50 | 41.95
From the renowned Mendoza region in Argentina, aromas with delicate floral notes and mocha for a velvety texture.

Côtes Du Rhône, Alain Jaume, Haut de Brun France **vg** 43.75
Raspberry, blackcurrant, liquorice, hints of white pepper.

Chateau Ste. Michelle Columbia Valley, Merlot USA 47.95
Aromas of black cherry and spice with a jammy fruit character making it something out of the ordinary.

Pinot Noir, Vidal Reserve, Marlborough New Zealand 53.25
Fragrant with red berry and floral aromas, notes of cherry and spice on the silky palate.

Banshee Sonoma County, Cabernet Sauvignon USA 64.50
Flavours of boysenberry, dark plum, blackberry, a smooth silky finish with hints of toasty mocha and vanilla.

Giovanni Rosso Barolo, 2017 Italy 84.95
Roses, ripe red fruits and cherry. A great wine to savour with richer foods.

Wines that are available by the glass, are also available in measures of 125ml.

vg vegan | all wines are **gf**

Vintages subject to availability

WINE

ROSÉ



Tempranillo Rosé, Vivienda Spain	7.25 9.95 28.50
Floral and fruity aromas.	
Pinot Grigio Rosato, Bottega Italy vg	7.75 10.50 30.95
A mouthwatering rosé with racy acidity and a delicious fruity finish.	
Côtes de Provence Rosé, Héritage France vg	10.95 14.95 42.95
Deliciously versatile with aromas of peach and pear.	
Wild Life Botanicals Blush (0.5%) UK vg	5.75 31.50
Refreshing, dry low alcohol sparkling wine, with wild strawberry and red apple aromas. Infused with vitamins, minerals and botanicals.	

DESSERT WINE

Petit Guiraud Sauternes 2020 France	47.95
Fresh, honeyed notes of apricot, date, and almond cream. A drop of everyday decadence.	

Wines that are available by the glass, are also available in measures of 125ml.

vg vegan | all wines are **gf**

Vintages subject to availability

GIN

SIGNATURE GIN & TONICS

all served as a 50ml measure

Herbaceous G&T	12.75
Botanist Gin combined with peach liqueur and Fever-Tree Elderflower Tonic	
Pink G&T	12.75
Didsbury Strawberry & Sicilian Lemon Gin, Chambord, Fever-Tree Tonic	
Rhubarb & Raspberry G&T	12.50
Slingsby Rhubarb Gin, bergamot liqueur, Fever-Tree Rhubarb & Raspberry Light Tonic	
Citrus G&T	12.50
Ramsbury Gin, orange & bitter lemon shrub, Fever-Tree Tonic	

served as a 25ml measure, mixers charged separately



Tanqueray (43.1%) Cameronbridge, Scotland	4.70
Hayman's Sloe Gin (26%) London, England	5.00
Slingsby Yorkshire Rhubarb Gin (40%) Harrogate, England	5.30
Hendrick's (41.4%) Girvan, Scotland	5.45
Cygnets Welsh Dry (40%) Swansea, Wales	5.60
Didsbury Strawberry & Sicilian Lemon (40%) Manchester, England	5.65
Hendrick's Neptunia (43.4%) Girvan, Scotland	5.65
Ramsbury Single Estate Gin (40%) Wiltshire, England	5.85
The Botanist Gin (46%) Islay, Scotland	5.95
Cygnets 22 (44%) Swansea, Wales	6.70

SPIRITS

RUM



served as a 25ml measure, mixers charged separately

Bush Mango Rum (37.5%) Guyana	4.70
Cut Spiced Rum (37.5%) Jamaica	4.70
Gosling's Black Seal (40%) Bermuda	4.70
Havana 3 year old (40%) Havana, Cuba	4.70
Mount Gay Eclipse (40%) Barbados	4.70
Kraken Black Spiced Rum (40%) Trinidad and Tobago	5.10
Don Papa 7 year old (40%) Philippines	5.35
Mount Gay Black Barrel (43%) Barbados	6.45
Two Drifters Overproof Spiced Pineapple Rum (60%) Exeter, England	6.70

VODKA

Smirnoff Vanilla (37.5%)	4.70
Discarded Chardonnay (40%) Scotland	5.30
Ketel One (40%) Netherlands	5.35
Ramsbury Single Estate Vodka (43%) Wiltshire	5.35
Chase English Rhubarb (40%) Herefordshire	5.85
Grey Goose (40%) France	6.15

SCOTCH WHISKY

Johnnie Walker Black Label (40%) Scotland	5.35
Glenfiddich 12 year old (40%) Speyside	5.85
Glenmorangie X (40%) Scotland	5.85
Monkey Shoulder (43%) Speyside	5.95
Talisker 10 year old (45.8%) Isle of Skye	6.70
Ardbeg 10 year old (46%) Isle of Islay	6.95
Auchentoshan Three Wood (43%) Lowlands	6.95

WORLD WHISKEY

Bulleit (40%) Kentucky, USA	4.70
Jack Daniel's Old No.7 (40%) Tennessee, USA	4.70
Jameson (40%) Middleton, Ireland	4.70
Woodford Reserve (43.2%) Kentucky, USA	5.60
Suntory Toki (43%) Japan	6.00
Woodford Reserve Double Oaked (43.2%) Kentucky, USA	7.50

TEQUILA

el Jimador Reposado (38%) Jalisco, Mexico	4.70
Don Julio Añejo (40%) Jalisco, Mexico	6.95

MEZCAL

Quiquiriqui Mezcal (45%) Oaxaca, Mexico	5.90
--	------

COGNAC

Martell VSOP (40%) Cognac, France	6.45
--	------

BRANDY

Burnt Faith (40%) London, England	5.95
--	------

HOT DRINKS

COFFEE

Double Espresso 6kcal	3.05
Americano 43kcal	3.40
Flat White 97kcal	3.60
Cappuccino 117kcal	3.60
Latte 159kcal	3.60
Mocha 221kcal	4.10
Hot Chocolate with marshmallows 252kcal	3.85


- extra shot 3kcal 1.15
- flavoured syrups from 58kcal 1.00
- soya milk 18kcal free
- oat milk 24kcal 60p

ICED COFFEE

Iced Latte 172kcal	4.60
Iced Vanilla Latte 172kcal	4.60

A PERFECT MATCHA

Iced Strawberry Matcha Latte A refreshing, vibrant twist on a matcha latte 242kcal	5.40
Iced Vanilla Matcha Latte 202kcal	5.20
Iced Matcha Latte 158kcal	4.40
Ginger Oat Matcha Latte A velvety oat matcha latte with a warm hint of ginger 171kcal	4.60
Vanilla Matcha Latte 179kcal	4.60
Matcha Latte 125kcal	3.60

In partnership with 

TEA

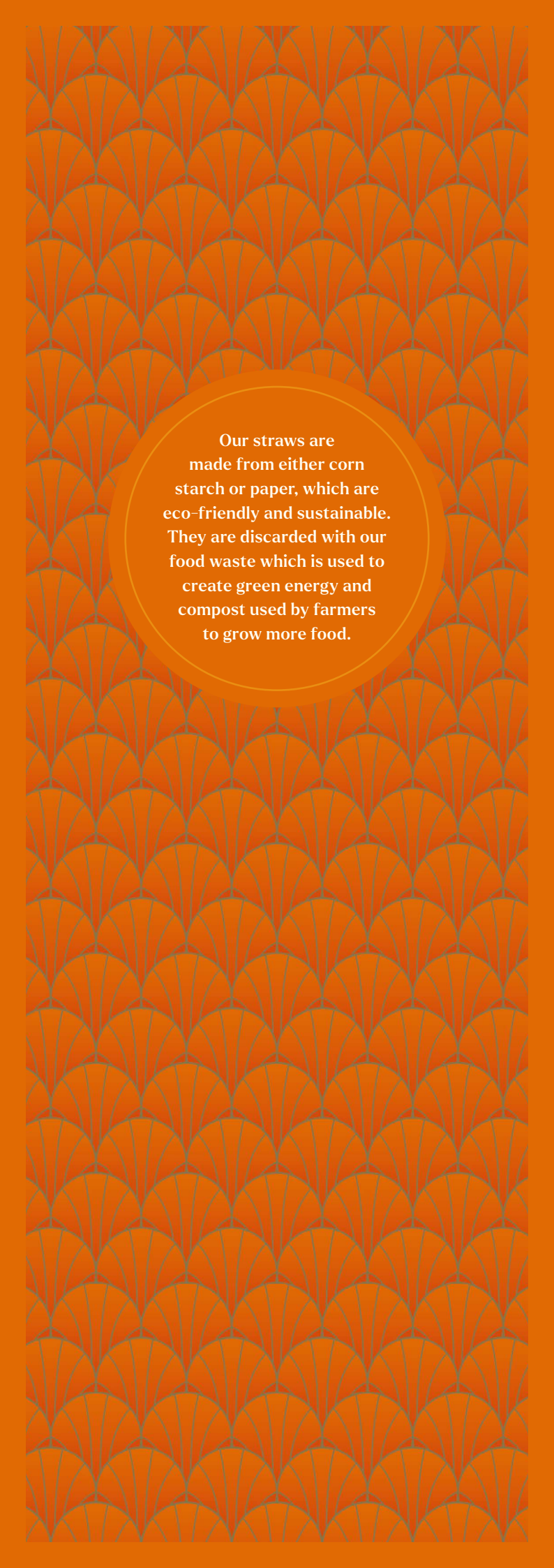
Breakfast Tea or Decaf Tea 13kcal 13kcal	3.00
Clifton Tea Co. Herbal Teas 1kcal	3.40
• Earl Grey	
• Peppermint	
• Green	
• Lemongrass & Ginger	
• Chamomile	



All kcals are per serving

kcal kilocalories (adults need around 2000kcal a day)

If you have any allergies or intolerances, please speak to a server before ordering. We cannot guarantee any of our drinks are 100% free of allergens.



Our straws are made from either corn starch or paper, which are eco-friendly and sustainable. They are discarded with our food waste which is used to create green energy and compost used by farmers to grow more food.